

## Renewal Youth Garden Market Basket Deliveries

- Barring floods or extreme cold, market basket deliveries will begin the second Tuesday in June.
- June-early July: Early on expect lighter baskets. Typical early crop items are: peas, spinach, lettuce, scallions, swiss chard, herbs, radishes, peas, arugula, flowers
- Mid July– end July: Typical items are: arugula, basil, beans, carrots, cucumbers, green peppers, hot peppers, herbs, lettuce, mixed greens, onions, potatoes, radishes, swiss chard, tomatoes, zucchini, flowers.
- Beg. Aug-Sept: Typical items are: arugula, basil, beans, beets, carrots, cucumbers, eggplant, flowers, green peppers, herbs, hot peppers, mixed greens, onions, potatoes, radishes, swiss chard, tomatoes, zucchini
- Beg. Sept.-mid Oct: Typical items are: arugula, beans, beets, broccoli, carrots, cucumbers, green peppers, hot peppers, leeks, onions, potatoes, swiss chard, spinach, tomatoes, winter squash.

For more information contact:  
Shelley Mordini  
608-963-3379  
smordini@baraboo.k12.wi.us  
Or  
Shirley Tollaksen  
608-963-3367  
shirleytollasken@msn.com



*The focus of the project is to provide area youth with an opportunity to obtain employability skills, improve personal nutrition, spend time outside, increase physical activity, gain life-long gardening skills, experience shared accomplishments, and provide community service through a market gardening operation that provides a food source for low-income families.*

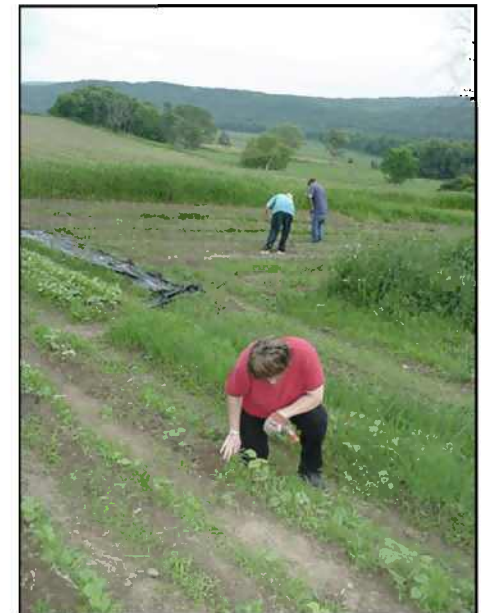
### Youth Work Experience Sponsorship

I would like to sponsor the paid work experience for a youth during the summer of 2009 for the following amount:

\_\_\_ 250.00(subsidizes 6 weeks @ 8hrs/wk)

\_\_\_ 500.00 (subsidizes 12 weeks @ 8hrs/ wk)

I will receive monthly correspondence from the sponsored youth, and a final report from the job training specialist explaining in detail the job skills the sponsored youth acquired during the course of the summer work experience.



Master Gardeners provide expertise and mentoring to youth involved in The Renewal Youth Garden Project

# Market Baskets

## Summer 2009

250.00 for 16-18 weeks

Note: We are a member of MACSAC, so your insurance company may subsidize part or all of the cost of your market basket. Go to <http://www.macsac.org/rebates.html> to view participating companies or contact your insurance company, if it's not listed.

Organic produce is delivered weekly from June thru early October

Market baskets will be delivered to:  
The Grainary, 127 3rd St, Baraboo.  
Customers can retrieve their baskets



### Opportunities for direct involvement:

- working alongside youth
- rototilling
- transportation/delivery
- donating mulch and compost
- promotion/media coverage
- computer research/recordkeeping

Check any of the above that interest you

## Market Basket Order Form

Summer 2009

\*Make checks payable to:  
**Renewal Youth Garden**

Name \_\_\_\_\_

Address \_\_\_\_\_

Phone \_\_\_\_\_

Email \_\_\_\_\_

Please enclose payment with this form and mail to:

**Renewal Unlimited, Inc.**  
2900 Red Fox Run  
Portage, WI 53901



**BARABOO  
AREA  
UNITED  
FUND**



# Renewal Youth Garden Project

A Partnership Between  
**Renewal Unlimited, Inc.**  
and **Baraboo High School**



Seasonal vegetables grown  
without pesticides  
or herbicides

The Renewal Youth Garden is supported by  
The Baraboo Area United Fund, The Friendship Fund,  
Baraboo Rotary Club, Physicians Plus, and Alliant Energy